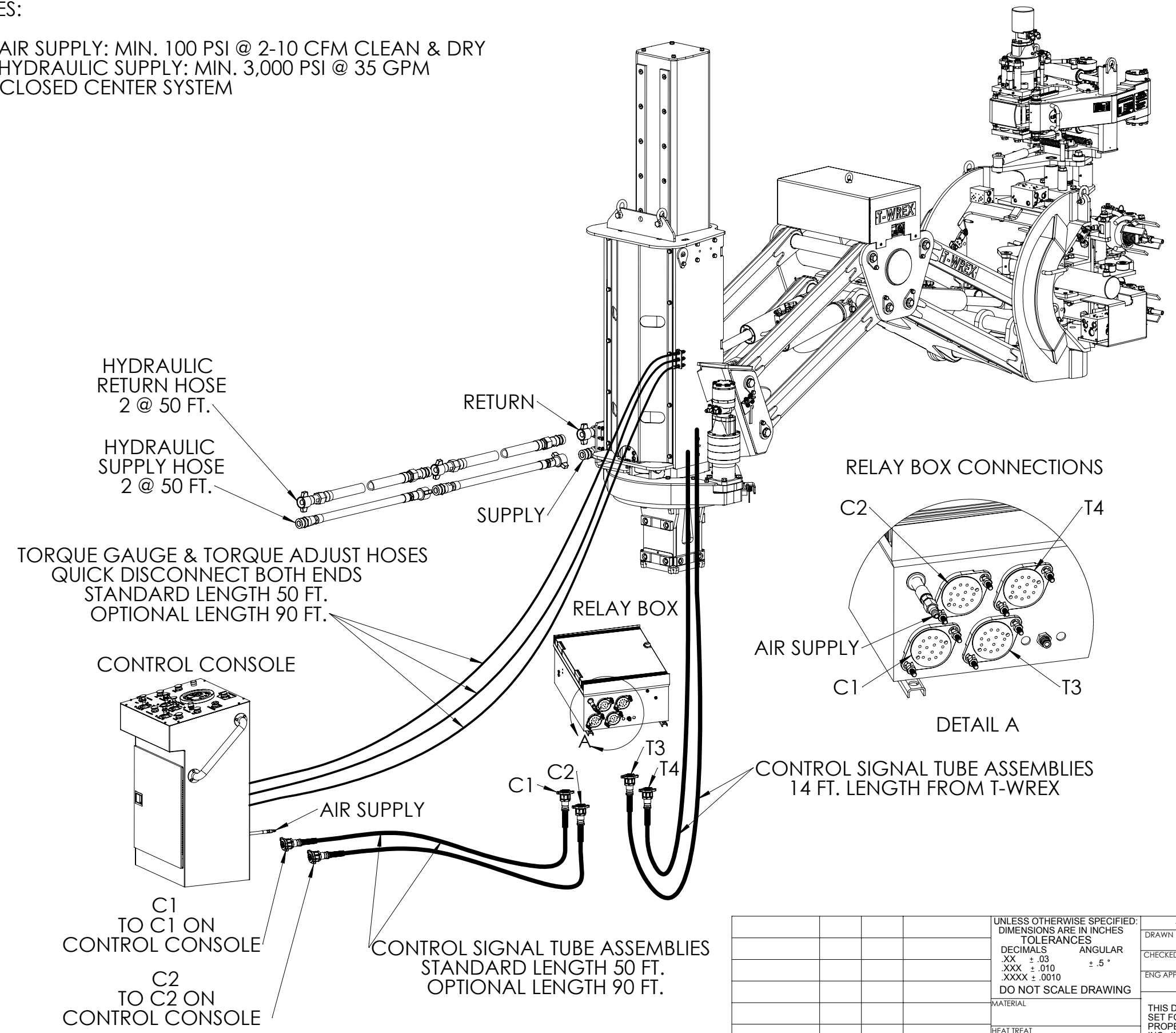


REVISIONS				
REV	DESCRIPTION	DATE	DRAWN	APPRVD
-	INITIAL RELEASE	7/21/09	AJ	

NOTES:

1. AIR SUPPLY: MIN. 100 PSI @ 2-10 CFM CLEAN & DRY
2. HYDRAULIC SUPPLY: MIN. 3,000 PSI @ 35 GPM CLOSED CENTER SYSTEM



NEXT ASSY	QTY PER SUB-ASSY	QTY PER UNIT	FINAL ASSY
APPLICATION			

UNLESS OTHERWISE SPECIFIED:
 DIMENSIONS ARE IN INCHES
 TOLERANCES
 DECIMALS ANGULAR
 .XX ± .03 ± .5°
 .XXX ± .010
 .XXXX ± .0010
 DO NOT SCALE DRAWING

APPROVALS		DATE
DRAWN	AJ	7/21/09
CHECKED	MR	7/21/09
ENG APPR.	AJ	7/21/09

HAWK INDUSTRIES INC
 1245 EAST 23rd STREET □ SIGNAL HILL, CA □ 90755 USA
 www.hawkindustries.com

TITLE
T-WREX SYSTEM INTERFACE

SIZE **B** DWG. NO. _____ REV -

SCALE: 1:1 WEIGHT: LBS SHEET 1 OF 1